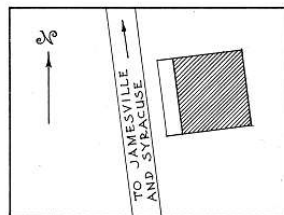


THE BEARD - CONAN STORE

POMPEY, ONONDAGA COUNTY, NEW YORK



SKETCH MAP
SHOWING LOCATION

ERECTED IN 1836
ARCHITECT - UNKNOWN
BUILDER - PETER & GARRY COLE

HISTORIC AMERICAN BUILDINGS SURVEY
U.S. DEPARTMENT OF THE INTERIOR
NATIONAL PARK SERVICE
BRANCH OF PLANS AND DESIGN

MEASURED: JULY - 1936

DRAWN: AUGUST - 1936

MEASUREMENTS CHECKED: AUGUST 26, 1936 J.M.T.



DRAWINGS APPROVED: *Walter H. Cassebeer* DISTRICT OFFICER.

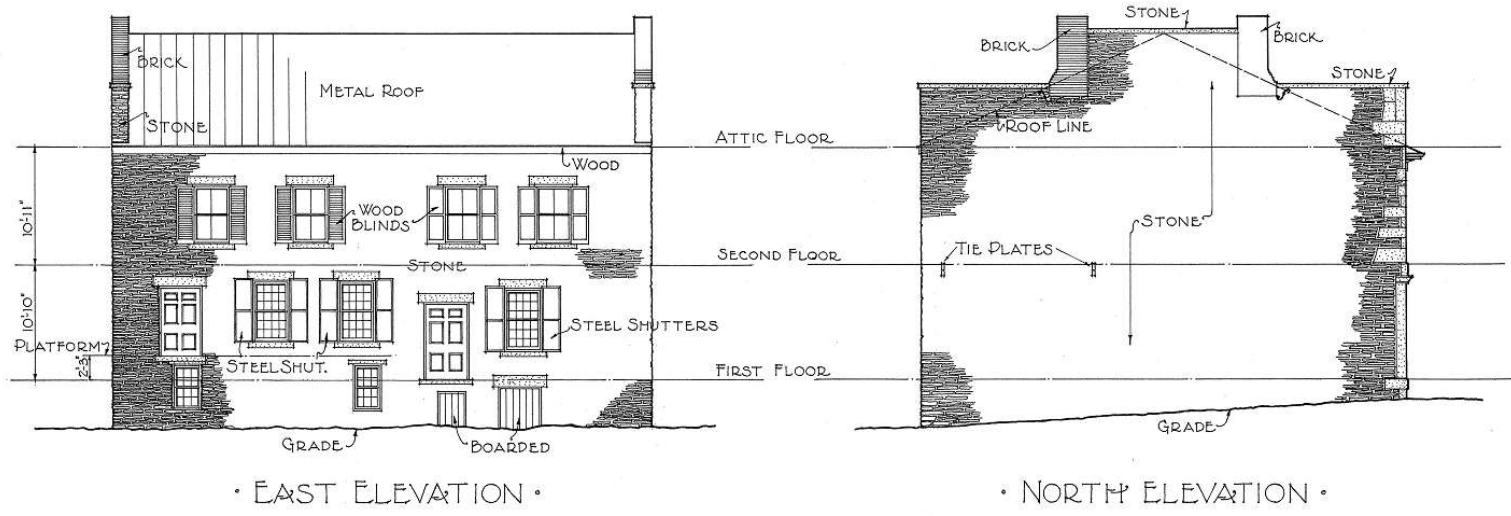
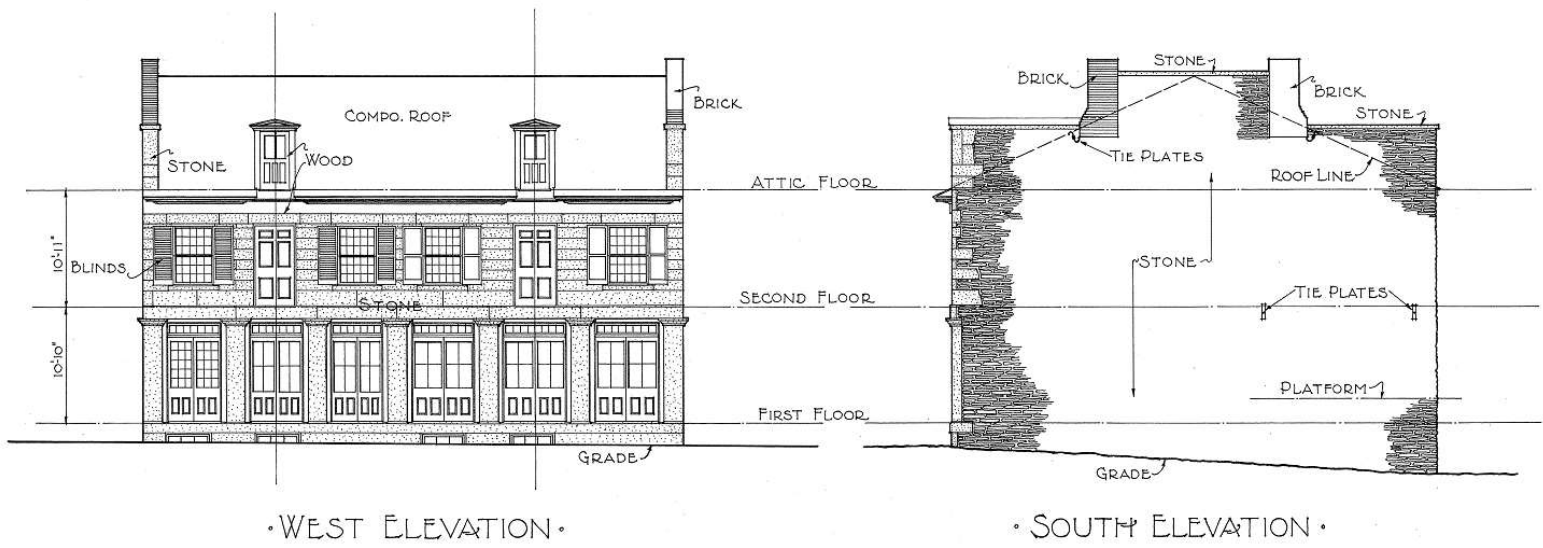
DRAWINGS APPROVED: *J. M. T.* CHIEF ARCHITECT.

ACCEPTED FOR LIBRARY OF CONGRESS: *Samuel B. ...*

DIST. NY-2 CENTRAL NEW YORK
WALTER CASSEBEER, DIST. OFFICER
84 EXCHANGE ST. ROCHESTER, N.Y.
FIELD PARTY
JOSEPH A. MCENNISS
HART LOT, ONONDAGA CO., N.Y.
EARL L. STANTON

SURVEY NO.
NY-225
SHEETS 1-6

INDEX NO.
N.Y.
34-Pomp
30

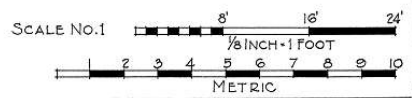
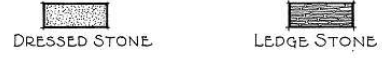


NOTE- ELEVATIONS DRAWN TO SCALE No.1.

HERBERT A. LAWRENCE - DEL. - AUG. 25, 1936.

WORKS PROGRESS ADMINISTRATION
 OFFICIAL PROJECT No. 265-6907.
 UNDER DIRECTION OF UNITED STATES DEPARTMENT OF THE INTERIOR
 NATIONAL PARK SERVICE, BRANCH OF PLANS AND DESIGN

MATERIAL SYMBOLS



NAME OF STRUCTURE
 • THE BEARD-CONAN STORE •
 POMPEY, ONONDAGA COUNTY, NEW YORK.



SURVEY NO.
 N.Y. 225

HISTORIC AMERICAN
 BUILDINGS SURVEY
 SHEET 2 OF 6 SHEETS

LIBRARY OF CONGRESS
 BLDG NUMBER

ADDITIONAL DATA:-

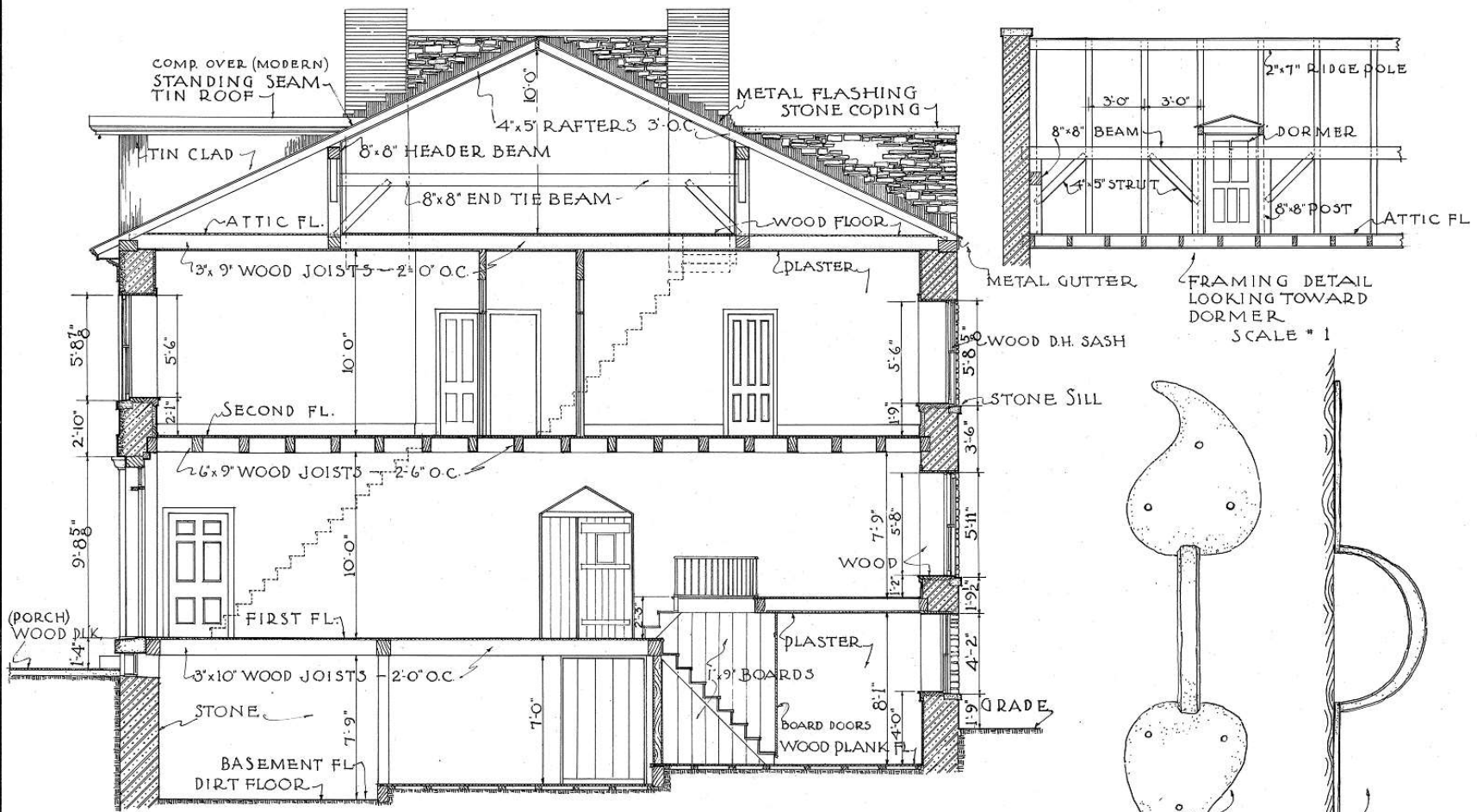
Pompey founded by Ebenezer Butler in 1792. & called. Butlers Hill until 1811 when name was changed to Pompey Hill. Building today in state of collapse on rear left corner.

AUTHOR OF CARD:

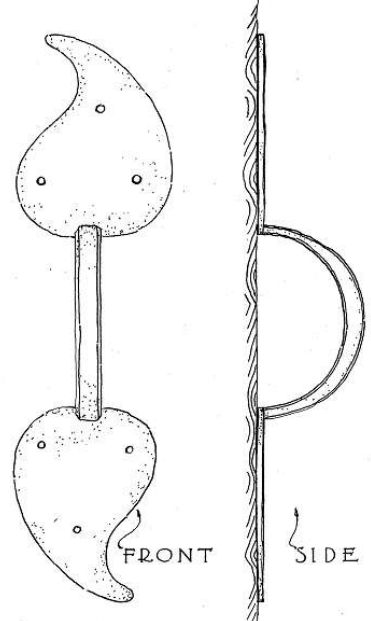
WALTER H. CASSEBEER

Aug. 1936.

84 Exchange St
Rochester N.Y.



FRAMING DETAIL
LOOKING TOWARD
DORMER
SCALE # 1

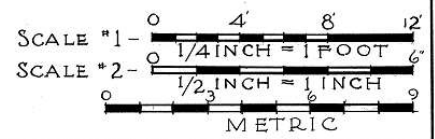


BASEMENT DOOR
HAND PULL W.I.
SCALE # 2

TRANSVERSE SECTION
SCALE # 1

MATERIAL SYMBOLS

	WOOD		PLASTER
	LEDGE STONE		METAL
	DRESSED STONE		DIRT



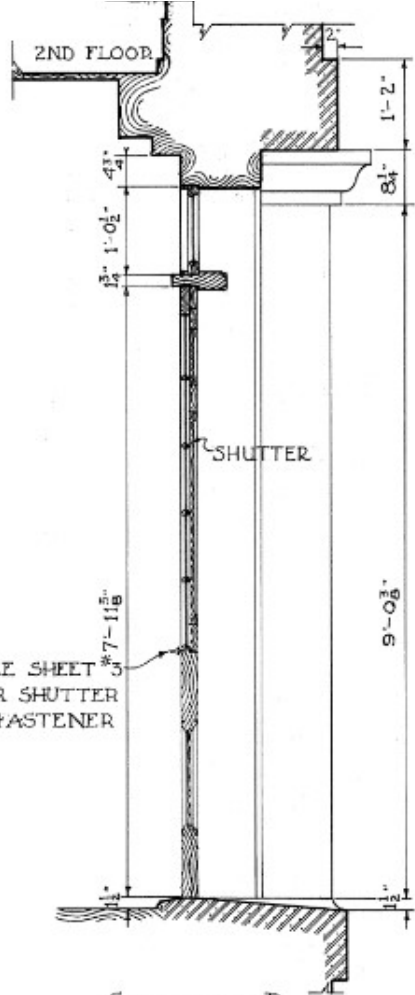
Don C Hershey Del. August 1936
WORKS PROGRESS ADMINISTRATION
OFFICIAL PROJECT - NO 265-6907
UNDER DIRECTION OF UNITED STATES DEPARTMENT OF THE INTERIOR
NATIONAL PARK SERVICE, BRANCH OF PLANS AND DESIGN

NAME OF STRUCTURE
THE BEARD-CONAN STORE
POMPEY, ONONDAGA COUNTY, NEW YORK

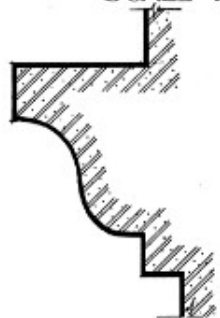
SURVEY NO.
NY 225

HISTORIC AMERICAN
BUILDINGS SURVEY
SHEET 3 OF 6 SHEETS

LIBRARY OF CONGRESS
INDEX NUMBER



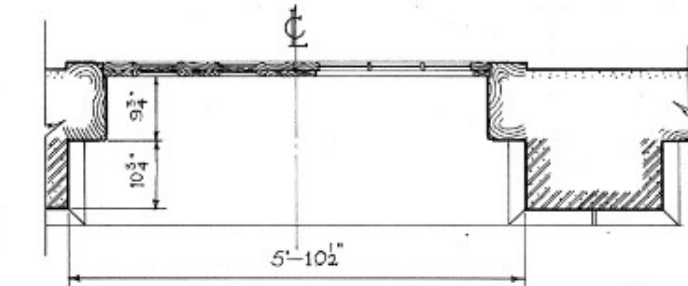
SECTION - D
SCALE - 1



SECTION - C
SCALE - 2



ELEVATION
SCALE - 1



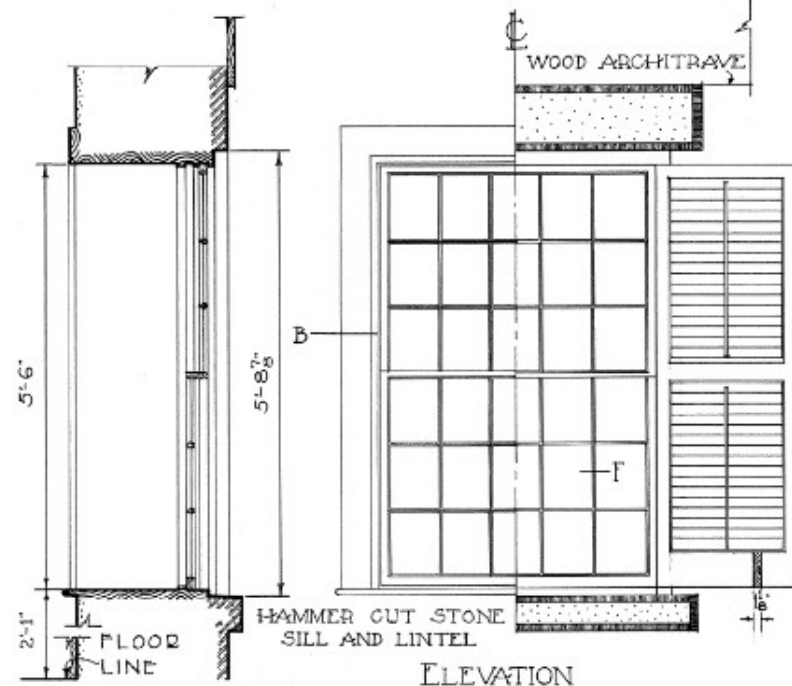
PLAN
SCALE - 1



SECTION - B
SCALE - 3

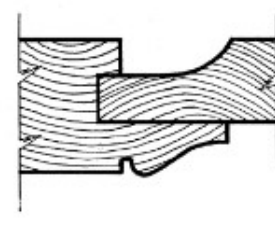


SECTION - F
SCALE - 3

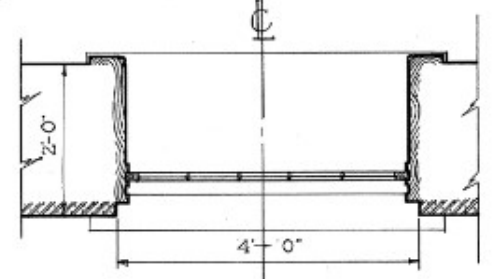


SECTION ON C-C
SCALE - 1

ELEVATION
SCALE - 1



SECTION - A
SCALE - 3

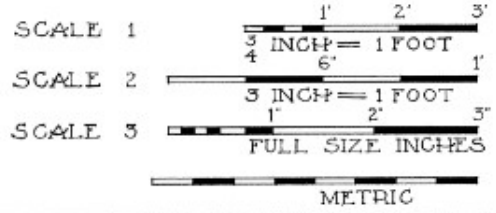


PLAN
SCALE - 1

MATERIAL SYMBOLS

- WOOD
- PLASTER
- STONE

FRONT WINDOW-SECOND FLOOR



FRONT DOOR-FIRST FLOOR

ENTRANCE TO STAIRS, SEE ELEVATIONS FOR GLASS DIVISION

MORTIMER E. BACON DEL. AUG, 11, 36.

WORKS PROGRESS ADMINISTRATION
OFFICIAL PROJECT NO. 265-6907

NAME OF STRUCTURE
THE BEARD - CONAN STORE

SURVEY NO.
NY-275

HISTORIC AMERICAN
BUILDINGS SURVEY

LIBRARY OF CONGRESS
INDEX NUMBER